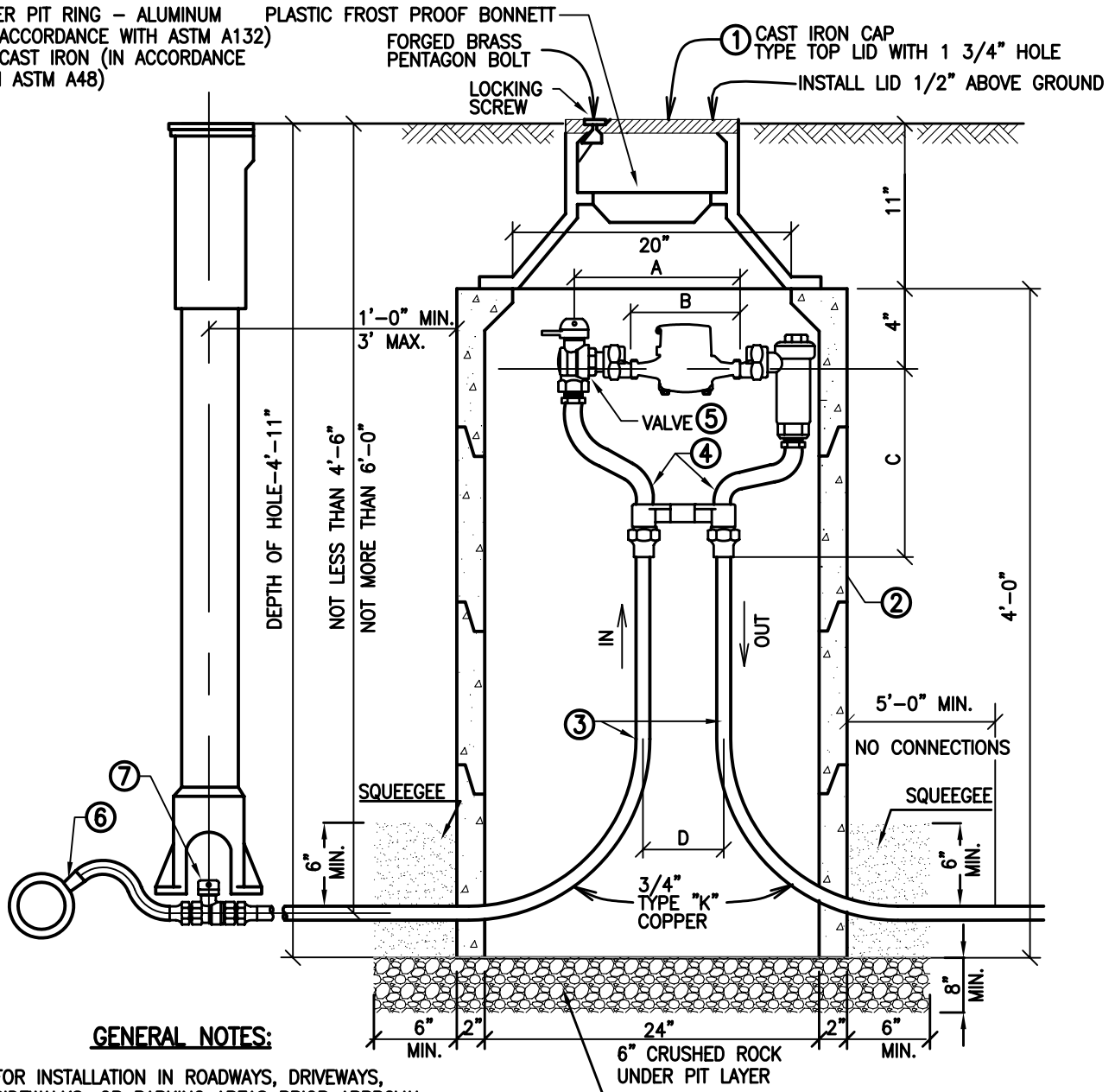


METER PIT RING - ALUMINUM
(IN ACCORDANCE WITH ASTM A132)
OR CAST IRON (IN ACCORDANCE
WITH ASTM A48)



GENERAL NOTES:

1. FOR INSTALLATION IN ROADWAYS, DRIVEWAYS, SIDEWALKS, OR PARKING AREAS PRIOR APPROVAL REQUIRED.
2. METER PITS SHALL BE 24" DIAMETER PRECAST CONCRETE PIT, 48" TALL. METER PIT COVER TO BE A CAST IRON ASSEMBLY WITH PLASTIC INNER FROST LID AND C.I. TOP LID DRILLED WITH A 1 3/4" HOLE FOR METER SENSOR PAD.
3. ADJUSTMENT RINGS SHALL BE 2", 3", 4" OR 6" IN HEIGHT AND SHALL BE INSERTED BETWEEN THE DOME AND TOP RING.
4. NO CONNECTIONS OR CHANGES IN PIPE DIAMETER SHALL BE MADE FROM THE MAIN/TAP TO A DISTANCE OF FIVE FEET BEYOND THE METER PIT WALL ON THE OUTLET SIDE.
5. LID SHALL SAY "WATER METER"

LIST OF MATERIALS

1. RING AND COVER - J'MARK NO. J-2290 (81 LBS.) OR APPROVED EQUAL WITH INTERNAL FROST LID.
2. METER PIT - ARCO NO. 24-4 PRECAST MANHOLE (24" DIA.) OR APPROVED EQUAL.
3. SERVICE LINE - COPPER TUBING TYPE K, SAME DIAMETER AS THE METER.
4. METER YOKE ASSEMBLY - FORD 80 SERIES COPPERSETTER WITH OUTLET VALVE BHC83W-22-33 (3/4" YOKE), VBHC 84W-22-44 (1" YOKE) OR APPROVED EQUAL.
5. SHUT-OFF VALVE.
6. CORPORATION STOP. A SADDLE MAY BE REQUIRED.
7. 3/4" FORD B-22-333 OR EQUAL
1" B-22-444

METER SIZE	A	B	C	D
3/4"	14-1/4"	9-5/16"	8-15/16"	5"
1"	17-1/4"	11-1/16"	11-1/4"	6"



13031 E Caley Ave, Centennial, Colorado 80111
Ph: (303) 790-4830 Fax: (303) 790-1718
© Copyright 2007 All Rights Reserved

**OUTSIDE DOMESTIC SETTING FOR
3/4" AND 1" METERS**

REVISION DATE:
4/30/2007

FIGURE NO.
W-1

SHEET NO.
1 of 1