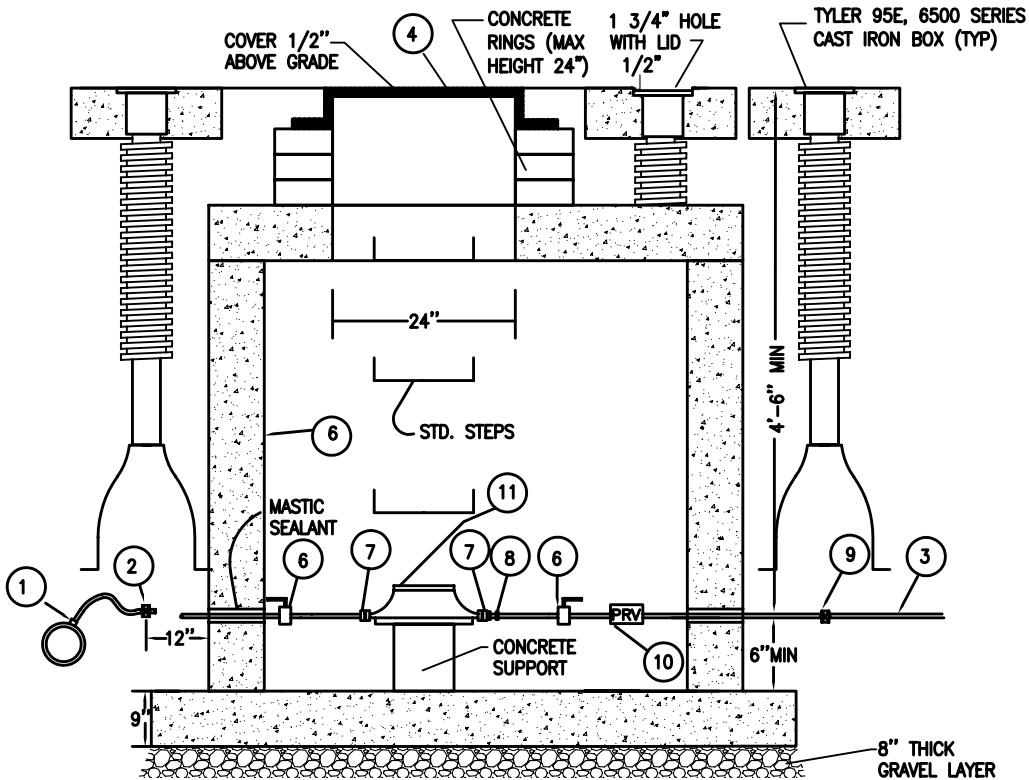


**SECTIONAL PLAN**  
NO SCALE

**FOOTING DETAIL**  
2 (REQUIRED)



**LIST OF MATERIALS**

- |  |   |
|--|---|
| <ol style="list-style-type: none"> <li>1. CORPORATION STOP VALVE.</li> <li>2. CURB STOP VALVE AND BOX W/ 2" OPERATOR NUT AND FLARED COPPER ENDS. CURB STOP VALVE BOX MUST BE A 3-PIECE BOX WITH 5-1/4" BARREL AND WIDE OVAL BASE (TYLER 6860 SERIES, OR APPROVED EQUAL)</li> <li>3. SERVICE LINE - COPPER TUBING TYPE K, SAME DIAMETER AS THE METER.</li> <li>4. RING AND COVER - J'MARK NO. J1163 (125 LBS. COVER) OR APPROVED WITH WATER CAST INTO COVER.</li> <li>5. METER PIT - 48" DIA. PRECAST MANHOLE ASTM C478, FLAT TOP.</li> <li>6. BALL VALVE- FORD BALL VALVE CURB STOP W/ FEMALE THREAD IRON PIPE &amp; FLARED COPPER ENDS OR EQUAL. (2 REQ.)</li> <li>7. BRASS FLANGE COUPLING.</li> </ol> | <ol style="list-style-type: none"> <li>8. FORD LOK-PAK ADJUSTMENT COUPLING W/2 STAINLESS STEEL SET SCREWS.</li> <li>9. STOP &amp; WASTE VALVE W/FLARED COPPER ENDS.</li> <li>10. PRESSURE REDUCING VALVE.</li> <li>11. METER INSTALLED BY ACWWA.</li> </ol> |
|--|---|

**NOTES**

1. ACWWA SHALL INSPECT FROM THE MAIN TO THE BUILDING PRIOR TO BACKFILLING.
2. IF THE SURFACE IS NOT TO FINAL GRADE AT TIME OF THE METER INSTALLATION, THE PROPERTY OWNER SHALL RAISE OR LOWER THE METER PIT ACCESS MANHOLE TO MATCH THE FINAL GRADE.
3. BRASS FLANGE COUPLINGS SHALL BE PROVIDED ON UPSTREAM AND DOWNSTREAM SIDES OF METER TO ALLOW FOR REMOVAL.
4. TOP STEP TO BE 18" TO 24" BELOW THE SURFACE, AT 12" VERTICAL INTERVALS.



13031 E Caley Ave, Centennial, Colorado 80111  
Ph: (303) 790-4830 Fax: (303) 790-1718  
© Copyright 2007 All Rights Reserved

**OUTSIDE IRRIGATION METER 1 1/2" AND 2"**

REVISION DATE:  
9/7/2005

FIGURE NO.

**W-5**

SHEET NO.

1 of 1